



# The German Education System

Rendsburg, Schleswig-Holstein, Germany



BBZ am Nord-Ostsee-Kanal  
Marko Kraemer, May 2016



## The 16 federal states

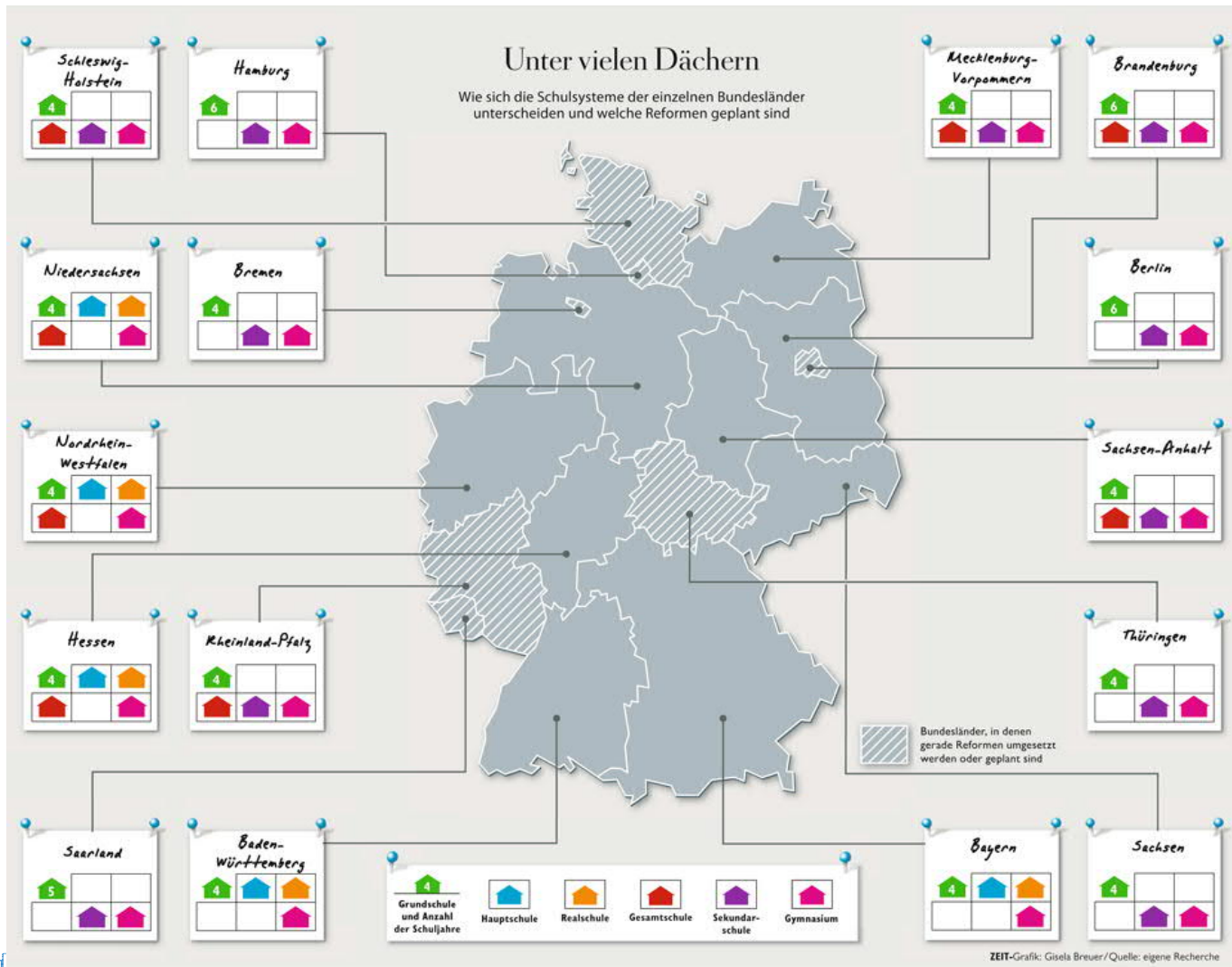


- 12 Mio. students in schools between grade 1 and 13
- 8.6 Mio students in primary and lower secondary education
- 15,2 % (1.3 Mio.) in all day schools
- 7.6 % (900 000) in private schools
- Different school types and systems
- Differences in curriculum
- Comparable degrees
- Comparable educational standards to measure achievement in primary and secondary education

➔ **problem: 16 different school systems**



BBZ am Nord-Ostsee-Kanal  
Marko Kraemer, May 2016



**Erasmus+**

BBZ am Nord-Ostsee-Kanal  
Marko Kraemer, May 2016





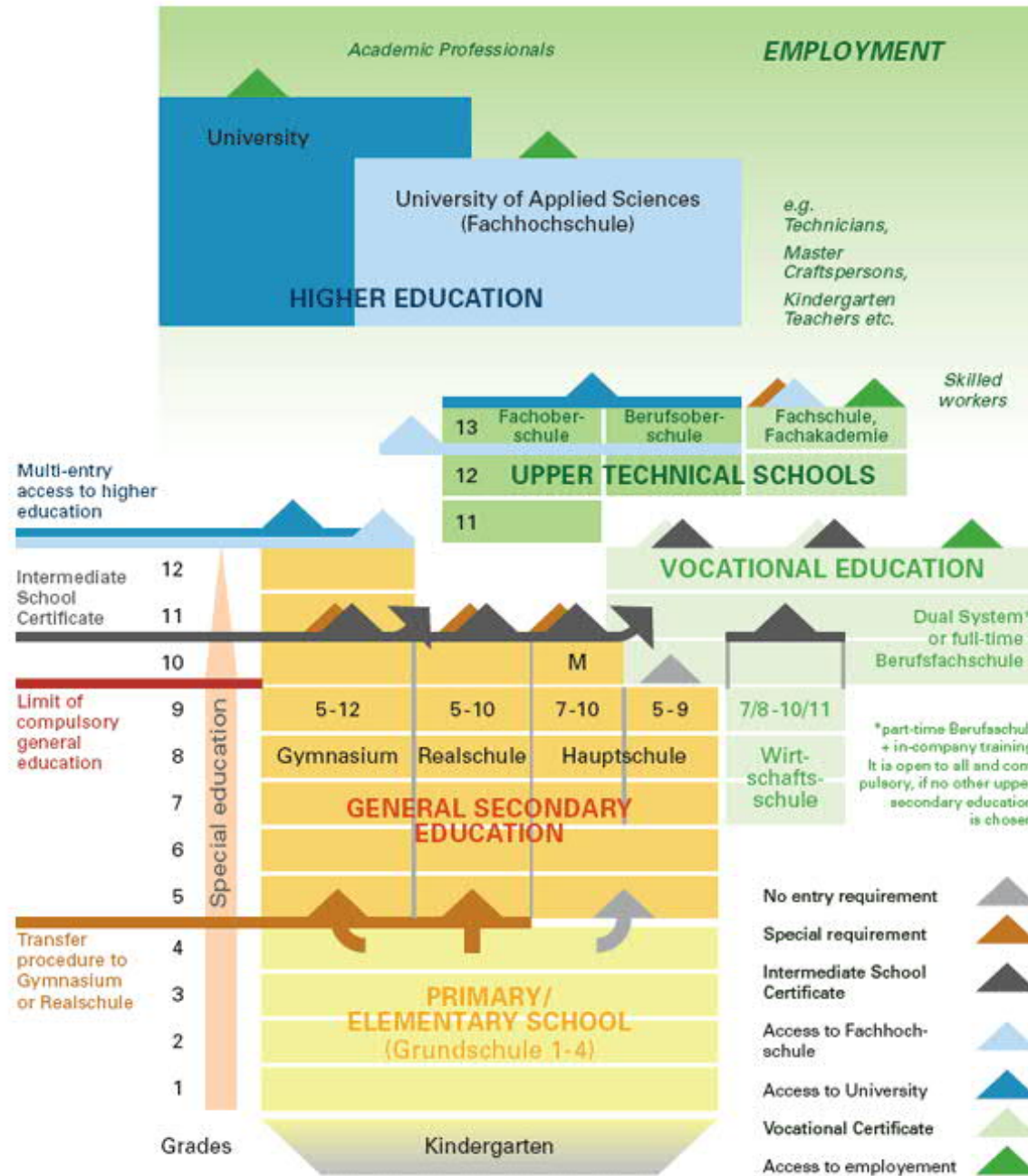
## Responsibilities

- most of responsibilities regarding Education are taken by the 16 federal states
- responsible body: KMK conferences unites the education minister of the federal states
- **each of the federal states is free to construct his own education system**
- the federal states have been and are harmonizing their education systems
- school-leaving certificates are recognized by all federal states if preconditions are fulfilled
- All pupils have a school attendance until they are 18 years old (Dual VET is accepted)





## General and Vocational Education Integrated in One Formal System

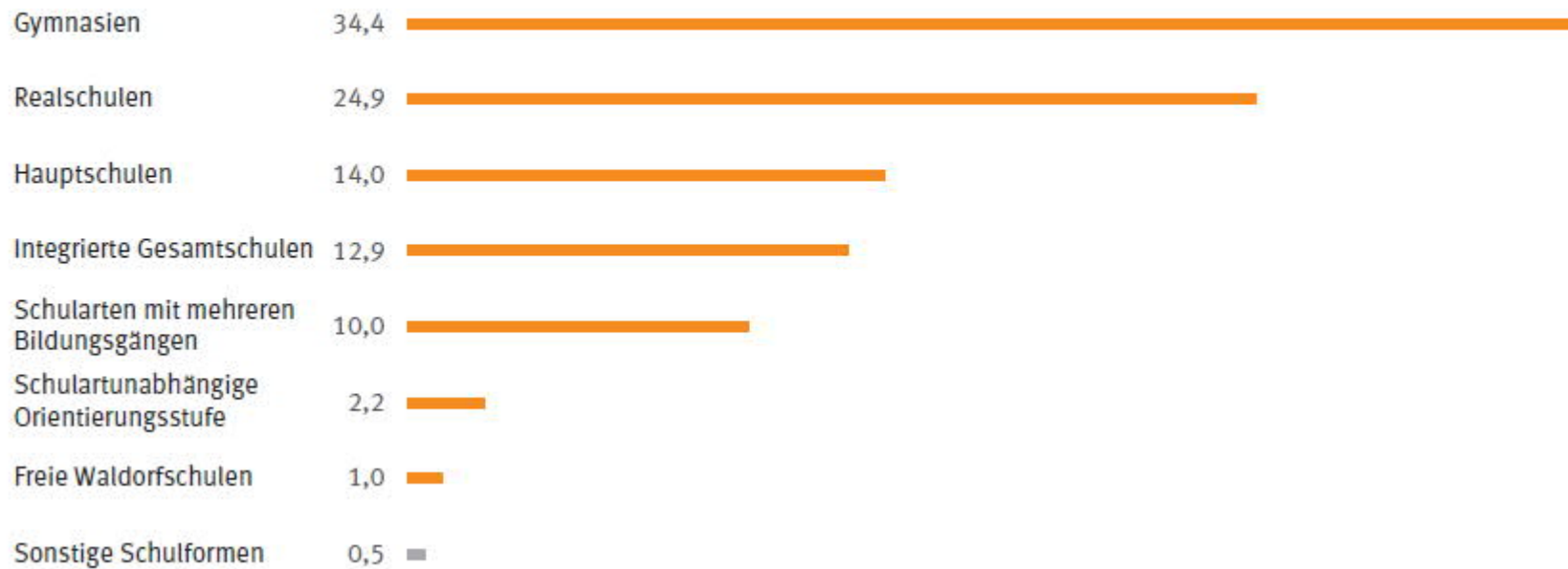




## students in the different school types

### Anteil der Schülerinnen und Schüler an allgemeinbildenden Schulen 2012/2013

Sekundarstufe I, in %



BBZ am Nord-Ostsee-Kanal  
Marko Kraemer, May 2016



BBZ am Nord-Ostsee-Kanal  
Europaschule

**Rendsburg, Schleswig-Holstein, Germany**



BBZ am Nord-Ostsee-Kanal  
Marko Kraemer, May 2016





## The school system in the federal state Schleswig-Holstein

After four-years primary school in Schleswig-Holstein the following types of secondary schools exist:

- ~~[the Regional School]~~, not anymore since 2014
- Community School and
- the grammar school (Gymnasium).

### Inclusion

More than half of children who are disabled or at risk of disability are taught in mainstream schools. In figures: In the school year 2011/12, 57 percent of students have participated with special needs classes in public schools of general education in Schleswig-Holstein.

### Community School

On the Community schools three educational degrees are awarded: the first general education school after nine years, the intermediate certificate after ten years and the general higher education after 13 years (G9). Since not all community schools have their own school, schools are to respond without their own school partnerships with schools of general education with private education and / or vocational schools.

### Grammar school

At grammar schools will received their general higher education (Abitur) usually after 8 years (G8).

